

■ XP-3000IIL

Data Logger Software for XP-3000II Series Gas Detectors

Instruction Manual

- Keep this manual for easy reference.
- Carefully read this manual prior to use.

NEW COSMOS ELECTRIC CO., LTD.

Note

- Copyright of this software is owned by New Cosmos Electric Co., Ltd. This software and this manual are protected by the Japanese copyright law, the Universal Copyright Convention, and other laws and conventions related to intangible property rights.
- Unauthorized use and reproduction of this software and this manual, either in part or in whole, are prohibited.
- This software and this manual may be used only under the license agreement on this product.
- New Cosmos Electric Co., Ltd. shall not be liable for any damage resulting from the use of this software and this manual.
- This software's specifications and the manual's contents are subject to change without prior notice.

Table of Contents

1. Introduction	1
<input type="checkbox"/> Symbols used in this manual	1
2. Package contents	2
3. Compatible OS and hardware	2
4. Installation	3
<input type="checkbox"/> Uninstallation	6
<input type="checkbox"/> Pairing	7
5. Startup and initial setup	9
<input type="checkbox"/> Startup	9
<input type="checkbox"/> Initial setup (environmental setting)	10
6. Main menu	11
7. Read measurement data	12
8. View measurement data list	14
<input type="checkbox"/> View measurement data list	14
<input type="checkbox"/> Measurement data list screen	15
<input type="checkbox"/> Measurement data selection	16
<input type="checkbox"/> Measurement data deletion	16
9. Edit measurement data	17
<input type="checkbox"/> Go to Edit measurement data screen	17
<input type="checkbox"/> Edit measurement data screen	18
<input type="checkbox"/> Output to CSV file	20
<input type="checkbox"/> Comment saving	20
<input type="checkbox"/> Measurement data deletion	21
10. Detector's log deletion	22

1. Introduction


Thank you for purchasing the XP-3000IIL data logger software. Please read this manual carefully to ensure correct operation and management of the measurement results of the XP-3000II series portable gas detectors.

The XP-3000IIL data logger software is a utility software named "Utility for XP-3000II" that enables users to receive/delete log data from gas detectors using Windows PC and Bluetooth and edit/save the log data in PC.

To ensure its correct use, please read this manual along with the instruction manual for the XP-3000II series gas detector.

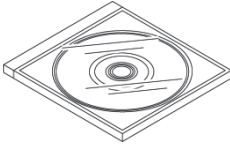
Symbols used in this manual

This manual uses Caution and Note symbols to draw attention to procedures, materials, methods, and processes, which require particular attention.

 CAUTION	Indicates a hazardous situation that may result in minor injury or property damage.
Note	Provides information on product handling.

2. Package contents

Check that the following items are in the package. If any items are missing or damaged, please contact New Cosmos or its authorized representative for replacement.



Installation CD x 1 pc



Instruction manual (this document) x 1 pc

3. Compatible OS and hardware

The following items are required to use the “Utility for XP-3000II” software.

* **OS**

Windows 8.1 or Windows 10 (Operation with other OS versions has not been verified.)



CAUTION

Before installing this software, run Windows Update and install the latest Windows service pack.

* **Display resolution**

1,920 × 1,080 (recommended)

* **Hard disk drive**

Hard disk drive's free space: 8.0 MB or more (This is necessary to install this data logger software. Saving log data etc. requires separate space.)

* **CD-ROM drive**

CD-ROM drive that enables the reading of CD-R data (for installing the data logger software from a CD-ROM)

* **Bluetooth device**

PC with a built-in Bluetooth module or Bluetooth 4.0 or higher adapter connected

4. Installation

Install the “Utility for XP-3000II” software into your PC.

The installation CD is required only once, that is, when you use the software for the first time.

A typical installation procedure using a standard Windows 10 system is provided below.

Before starting the installation, close all other programs.

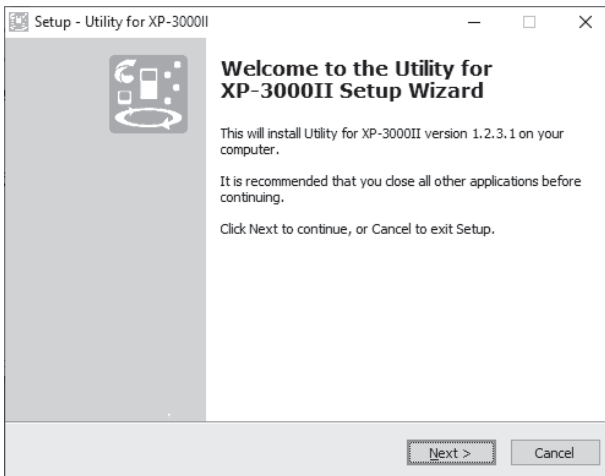
(1) Insert the installation CD into the CD-ROM drive of the PC.

Double-click on “SetupWin10_UtilityXp3000ii.exe” in the installation CD to start the program.

(Double-click on “SetupWin81_UtilityXp3000ii.exe” when using Windows 8.1)

If a security-related warning appears, click on “Yes”, “Execute”, “Continue”, or “Agree” to continue the installation. The language selection screen may appear if your PC is multilanguage compatible. If it appears, select the desired language.

The installer runs, and the ‘Setup Wizard’ screen appears.



CAUTION

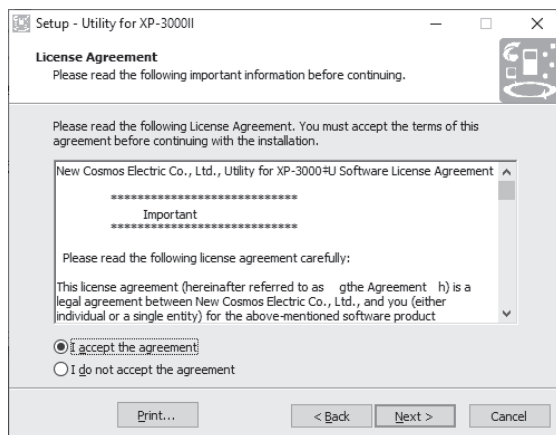
When using Windows user rights with an account other than the Administrator's, the username and password need to be entered. Software installation is not possible without them. Contact the administrator for username and password.

Note

- If it takes more than 10 minutes to copy the setup files, it is recommended to stop the installation and temporarily disable anti-virus software, etc. Do not forget to enable it later for security.
- “.exe” at the end of the filename may not be displayed, depending on the Windows settings.

4. Installation (continued)

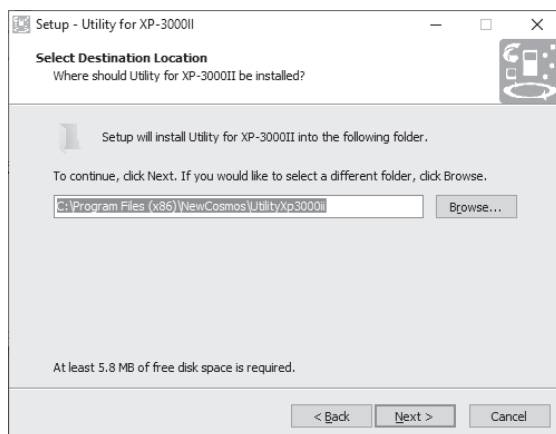
- (2) Follow the instructions on the screen, and click on [Next >].
The 'License Agreement' screen appears. Scroll down and read all the terms of the agreement carefully. If you consent to all the terms of the agreement, select "I accept the agreement" and click on [Next >].



CAUTION

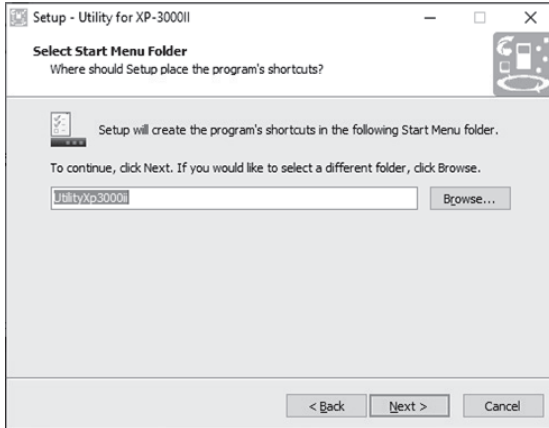
Before installing or using this software, carefully read all the terms of the license agreement. You are licensed to use this software only if you accept all the terms of the agreement.

- (3) The 'Select Destination Location' screen appears.
Click on [Next >].

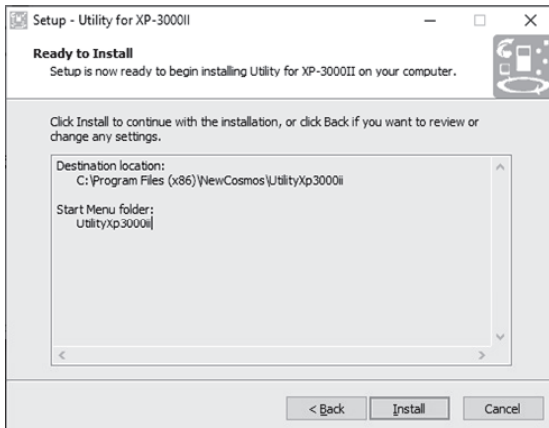


4. Installation (continued)

- (4) The 'Select Start Menu Folder' screen appears.
Click on [Next >].

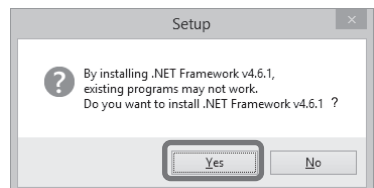


- (5) The 'Ready to Install' screen appears.
Click on [Install].
Installation starts.



Note

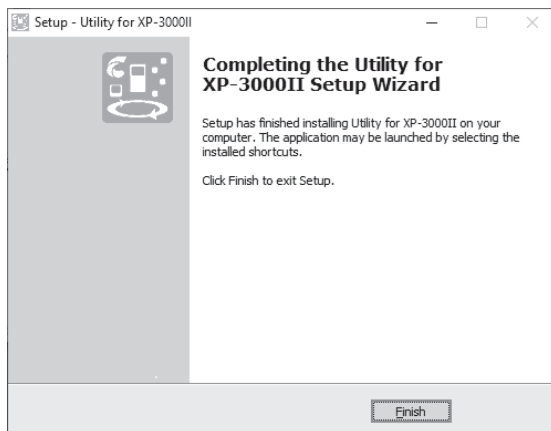
When using Windows 8.1, a dialog box to the right appears. Click on [Yes] to install “.NET Framework v4.6.1”. If not installed, an error will occur when the “Utility for XP-3000II” program starts, and the program will not run normally.



4. Installation (continued)

- (6) After the executable files and libraries are copied and registered, the 'Setup Wizard completion' screen appears.

If this screen is displayed, the installation is complete.



- (7) Click on [Finish].

A UtilityXp3000ii icon is created on the desktop.



Note

- The icon created on the desktop is a short-cut icon, and it may be moved or deleted.
- The program is installed in the following location by default:
C:\Program Files (x86)\NewCosmos\UtilityXp3000ii

□ Uninstallation

To uninstall the "Utility for XP-3000II" software, go to "Uninstall or change a program" from the Windows menu. Even if the software is uninstalled, the measurement data will not be deleted. The measurement data is saved in the "C:\ProgramData\UtilityXp3000ii\Data" folder.

"C:\ProgramData\" is a hidden folder. Unhide it through PC settings.

4. Installation (continued)

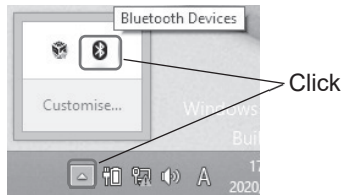
□ Pairing

When using Windows 8.1, manual pairing is required each time. To pair with a Bluetooth device, take the following steps each time.

*When using Windows 10, the gas detector will be automatically paired with the PC when its Bluetooth is set to ON. Therefore, the following steps are not required.

Manual pairing procedure

- (1) By referring to the gas detector's instruction manual, set the detector's Bluetooth to ON.
- (2) Click on [△] shown in the taskbar of the PC screen, and then click on [✕].

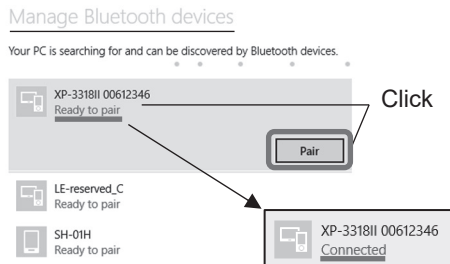
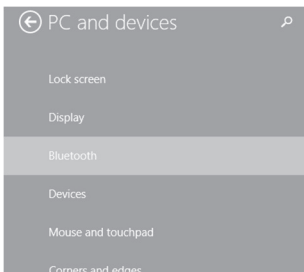


- (3) The following menu appears. Click on “Show Bluetooth Devices”.



- (4) The ‘Manage Bluetooth devices’ screen appears. “Ready to pair” is displayed for the target detector. Click on it, and then click on [Pair]. A successfully completed pairing replaces “Ready to pair” with “Connected”. Now it is possible to read out the measurement data from this detector.

It takes a few minutes to complete a pairing when using Windows 8.1.



4. Installation (continued)

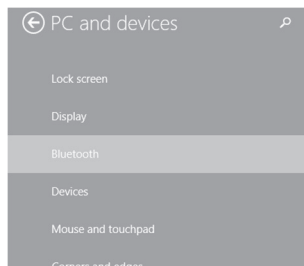
Note

Windows 8.1: Each time when the pairing is disconnected (e.g., when the “Utility for XP-3000II” software is exited, when the gas detector is turned off, or when the gas detector’s Bluetooth is turned off), re-pairing is required.

Windows 10: Re-pairing is not required because automatic pairing will take place when the gas detector’s Bluetooth is set to ON.

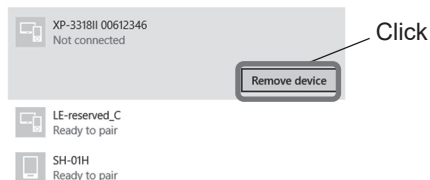
Re-pairing procedure

- (a) When the pairing is disconnected, “Not connected” is shown for the corresponding detector on the ‘Manage Bluetooth devices’ screen. Click on it, and then click on [Remove device] to delete it from the screen.
- (b) Take Steps (1) to (4) on the previous page to pair with the detector again.



Manage Bluetooth devices

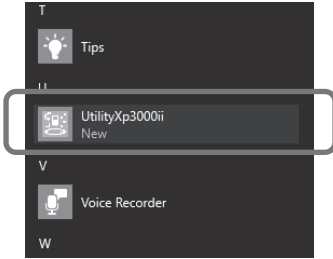
Your PC is searching for and can be discovered by Bluetooth devices.



5. Startup and initial setup

□ Startup

- (1) Select "UtilityXp3000ii" from the start menu or double-click on the UtilityXp3000ii icon on the desktop to start the "Utility for XP-3000II" program.

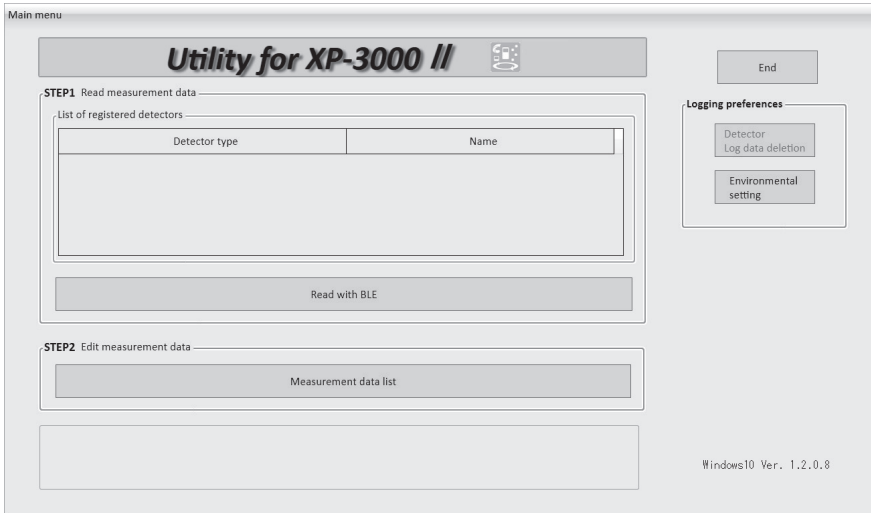


Start menu



UtilityXp3000ii icon on the desktop

- (2) The main menu appears.

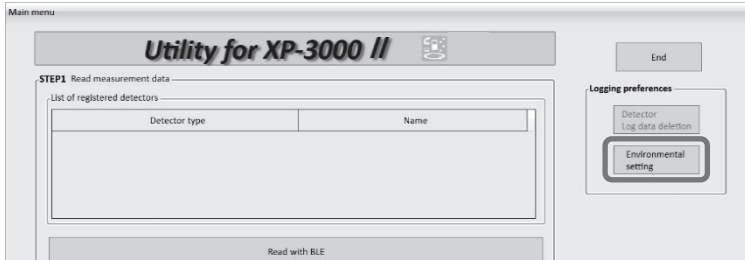


5. Startup and initial setup (continued)

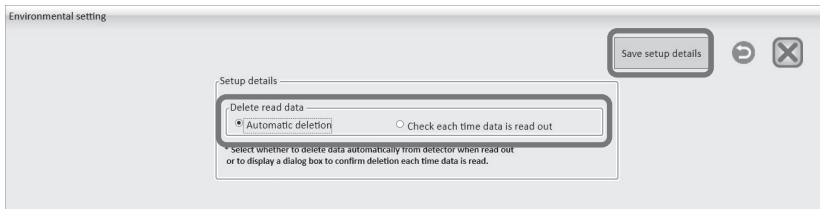
□ Initial setup (environmental setting)

Select the log data deletion method: You can set it to automatically delete the measurement data from the gas detector upon reading it or to confirm with you before deletion every time.

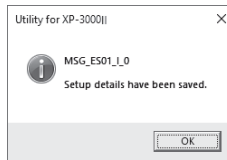
(1) Click on [Environment setting] on the main menu.




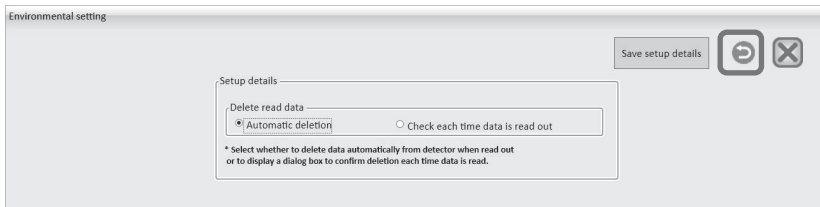
(2) Select the data deletion method, and click on [Save setup details].



(3) If a dialog box with the message "Setup details have been saved" appears, click on [OK].

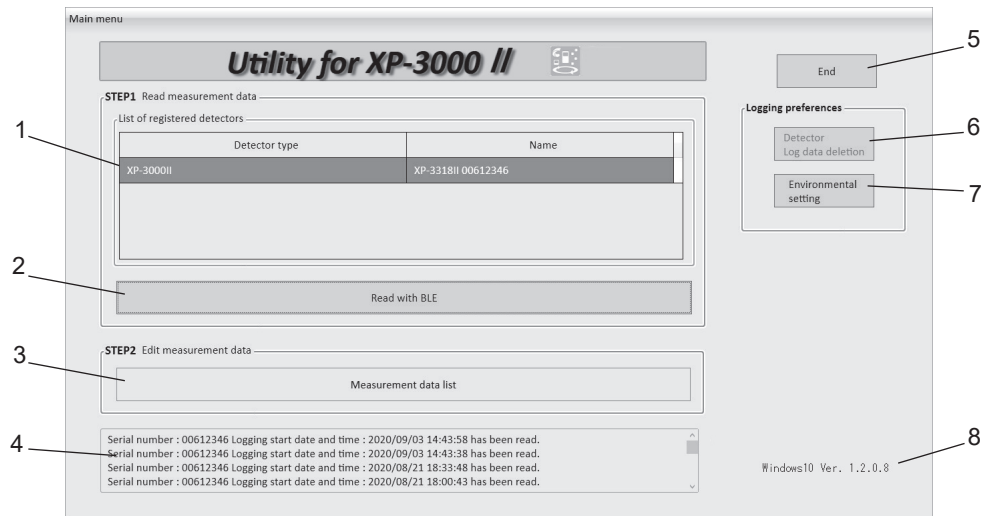


(4) Click on the  button to return to the main menu.



6. Main menu

The buttons and indications on the main menu are described below.

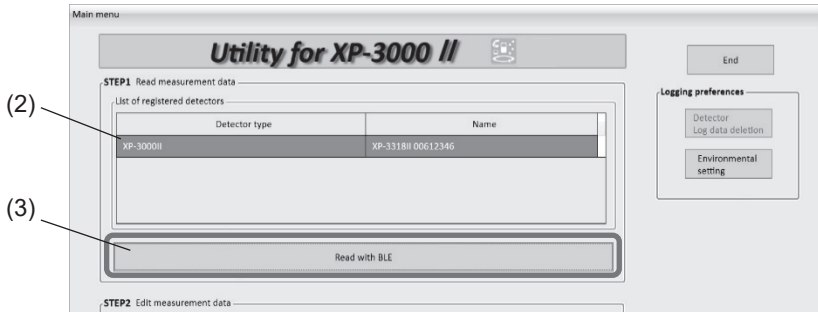


Item	Button/indication	Function
1	List of registered detectors	Displays a list of detectors whose data can be read via Bluetooth Select a detector to be read
2	[Read with BLE] button	Used to read the measurement data from a selected detector via Bluetooth. The data is saved at the same time as it is read. Refer to 7. "Read measurement data" on pages 12 and 13
3	[Measurement data list] button	Used to view a list of measurement data read from the detectors Refer to 8. "View measurement data list screen" on pages 14 to 16
4	Log history	Lists log data obtained from the gas detectors
5	[End] button	Used to end the "Utility for XP-3000II" program
6	[Detector log data deletion] button	Used to delete log data from the detector Refer to 10. "Detector's log deletion" on pages 22 and 23
7	[Environmental setting] button	Used to select the log data deletion method Refer to "Initial setup" on page 10
8	Software version	"Utility for XP-3000II" software version

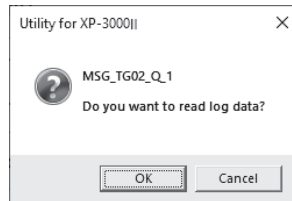
7. Read measurement data

It is possible to read measurement data from the gas detector via Bluetooth.

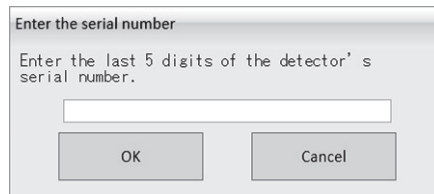
- (1) By referring to the gas detector's instruction manual, set the detector's Bluetooth to ON and its data logging function to OFF.
- (2) Select a detector from the list of registered detectors.
- (3) Click on [Read with BLE].



- (4) A dialog box asking if you want to read log data appears. Click on [OK].

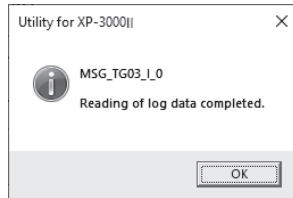


- (5) A dialog box prompting you to enter the serial number of the selected detector appears. Enter the last 5 digits of the serial number, and then click on [OK].
Note: The serial number entry is required only one time when you read data from the detector for the first time.



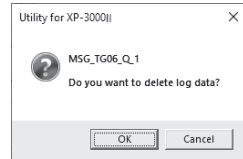
7. Read measurement data (continued)

(6) A dialog box indicating the completion of reading appears. The read data has been saved in the PC. Click on [OK].



Note

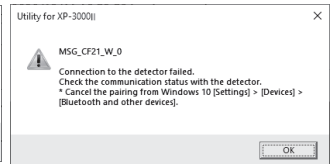
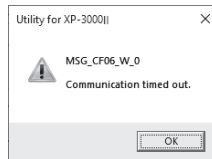
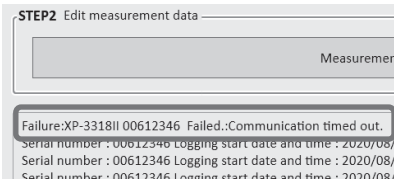
- When the log data deletion method is set to “Check each time data is read out” on the environmental setting screen (page 10 (2)), a dialog box to the right appears. If you want to read this data from other PC, click on [Cancel] to keep the data.
- It takes approximately six minutes (maximum) to read the measurement data.



CAUTION

- Do not turn off the gas detector while measurement data reading is going on. Normal reading is not possible if the gas detector is turned off while reading is in progress.
- Perform reading in clean air. Normal reading is not possible if a gas/fault alarm activates while the reading is in progress. For handling a gas/fault alarm, refer to the gas detector’s instruction manual.
- If the reading fails (e.g., due to communication error or timeout, see examples below), go to the ‘Manage Bluetooth devices’ screen to check that “Connected” is shown for the relevant detector (page 7 (4)). Perform reading again with “Connected” being shown.

If the reading failure continues even after restarting the gas detector and this software and re-pairing, consult New Cosmos or its authorized representative.

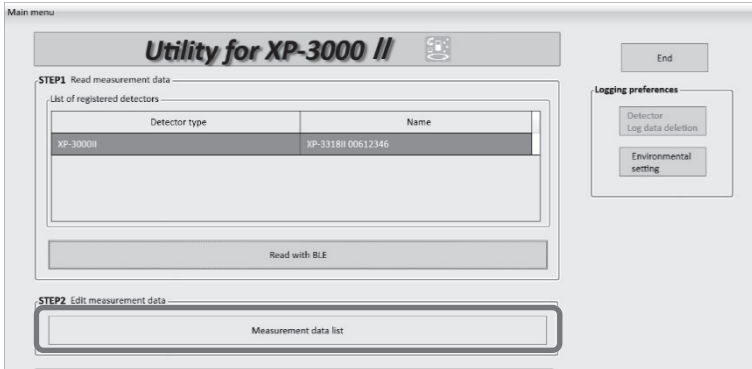


8. View measurement data list

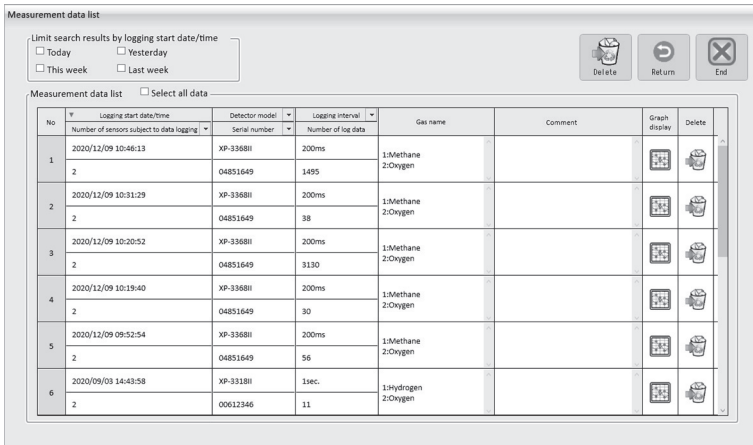
View a list of the measurement data that were obtained from the gas detectors.

View measurement data list

- (1) Read the measurement data from the gas detectors (pages 12 and 13).
- (2) Click on [Measurement data list] on the main menu.



- (3) The 'Measurement data list' screen appears.



8. View measurement data list (continued)

□ Measurement data list screen

The buttons and indications on the 'Measurement data list' screen are described below.

1 Limit search results by logging start date/time
 Today Yesterday
 This week Last week

2 Measurement data list Select all data

3 "▼" Pull-down menu

4 Delete Return End

5

No.	Logging start date/time	Detector model Serial number	Logging interval Number of log data	Gas name	Comment	Graph display	Delete
1	2020/12/09 10:46:13	XP-3368II 04851649	200ms 1495	1:Methane 2:Oxygen			
2	2020/12/09 10:31:29	XP-3368II 04851649	200ms 38	1:Methane 2:Oxygen			
3	2020/12/09 10:20:52	XP-3368II 04851649	200ms 3130	1:Methane 2:Oxygen			
6	2020/09/03 14:43:58	XP-3318II 00612346	1sec 11	1:Hydrogen 2:Oxygen			

▼ (or ▲)
 Click on each item (items marked with * in the table below) to show ▼ (or ▲) for sorting in the descending or ascending order

Item	Button/indication	Function
1	Search options	Helps limit the search by allowing you to select the logging start date (e.g., Today, Yesterday)
2	Measurement data list	Displays a list of measurement data that were read from detectors. If you click on "▼" and select an option from each pull-down menu, the relevant measurement data will be displayed
	Select all data	Check this box to select all the data on the list
	No.*	Numbered according to the logging start date/time in chronological order
	Logging start date/time*	Logging start date and time
	Number of sensors subject to data logging*	Number of sensors logged
	Detector model*	Gas detector's model
	Serial number*	Gas detector's serial number
	Logging interval*	Logging interval rate
	Number of log data*	Number of data logs
	Gas name	Gas type measured
	Comment	Comment entered from the 'Edit measurement data' screen
	Graph display	Clicking on this icon takes you to the 'Edit measurement data' screen
Delete	Clicking on this icon deletes the measurement data	

(To be continued)

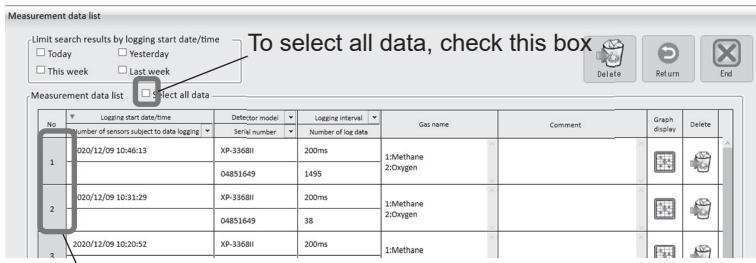
8. View measurement data list (continued)

(Continued)

Item	Button/indication	Function
3	[Delete] button	Clicking on this button deletes selected measurement data
4	[Return] button	Clicking on this button returns you to the main menu
5	[End] button	Used to end the “Utility for XP-3000II” program. (Clicking this button shows a dialog box for confirmation. Click on [OK] to confirm the end the program.)

Measurement data selection

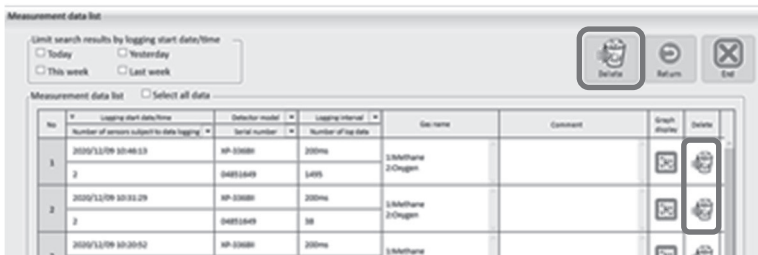
Select a measurement data by clicking on its corresponding number(s). To select all the data on the list, check the box for “Select all data”.



Click on the number to select

Measurement data deletion

- (1) Select the measurement data that you want to delete by clicking on its corresponding number. (Refer to “Measurement data selection” above.)
- (2) Click on the [Delete] button or the trashcan icon.



- (3) A dialog box indicating the completion of deletion appears. Click on [OK].



CAUTION

Once measurement data is deleted, it cannot be restored. Before deleting any data, verify whether you need to do so.

9. Edit measurement data

It is possible to edit and view the measurement result in graph form by specifying conditions.

☐ Go to Edit measurement data screen

- (1) Select a measurement data to be edited by clicking on its corresponding graph display icon.

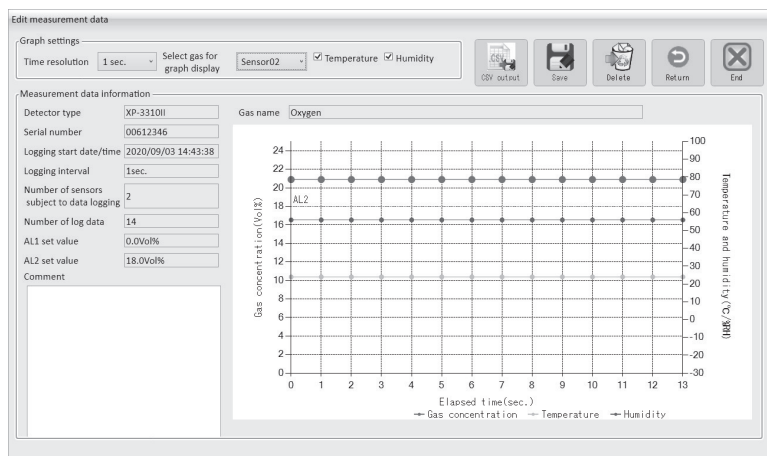
Measurement data list

Limit search results by logging start date/time
 Today Yesterday
 This week Last week

Measurement data list Select all data

No.	#	Logging start date/time Number of sensors subject to data logging	Detector model Serial number	Logging interval Number of log data	Gas name	Comment	Graph display	Delete
1	1	2020/12/09 10:46:13	XP-3368H	200ms	1:Methane 2:Oxygen			
	2	04851649	1495					
2	1	2020/12/09 10:31:29	XP-3368H	200ms	1:Methane 2:Oxygen			
	2	04851649	38					
3	1	2020/12/09 10:20:52	XP-3368H	200ms	1:Methane 2:Oxygen			
	2	04851649	3130					
4	1	2020/12/09 10:19:40	XP-3368H	200ms	1:Methane 2:Oxygen			
	2	04851649	30					
5	1	2020/12/09 09:52:54	XP-3368H	200ms	1:Methane 2:Oxygen			
	2	04851649	56					
6	1	2020/09/03 14:43:58	XP-3318H	1sec.	1:Hydrogen 2:Oxygen			
	2	00612346	11					

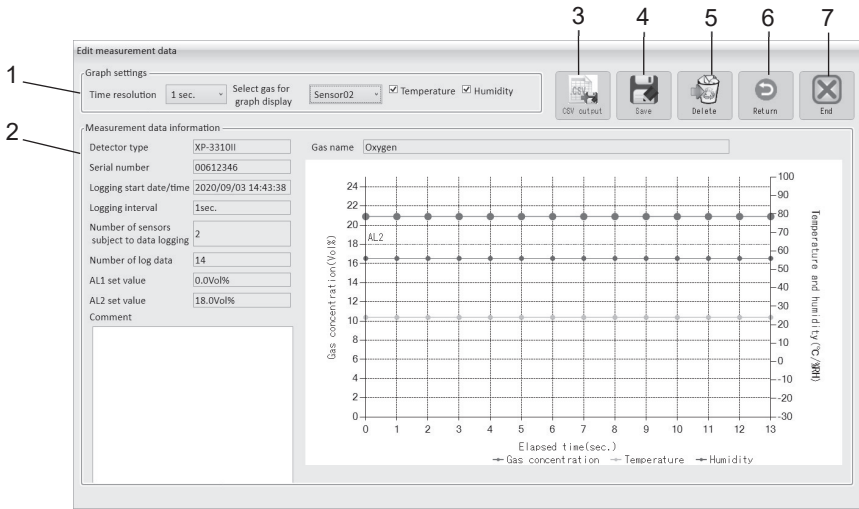
- (2) The 'Edit measurement data' screen appears.



9. Edit measurement data (continued)

□ Edit measurement data screen

The buttons and indications on the 'Edit measurement data' screen are described below.



Item	Button/indication	Function
1	Graph settings	Used to select the conditions for graph display
	Time resolution	Used to select the unit of time from the pulldown menu
	Select gas for graph display	Used to select the sensor to be displayed in graph form from the pulldown menu
	Temperature/humidity	Check the box to add the temperature/humidity trend to the graph
2	Measurement data information	Measurement data details read from the gas detector
	Detector type	Gas detector's model
	Serial number	Gas detector's serial number
	Logging start date/time	Logging start date and time
	Logging interval	Logging interval rate
	Number of sensors subject to data logging	Number of sensors logged
	Number of log data	Number of data logs
	AL1 set value	1 st stage alarm set value "0" is displayed when AL2 is not set
	AL2 set value	2 nd stage alarm set value AL1 set value is displayed when AL2 is not set
	Comment	Enter a comment here, if any. Comment entered here will be displayed on the 'Measurement data list' screen
	Gas name	Gas type measured
(Graph)	Measurement result in graph form If the measured values exceed the F.S. value, they are replaced with the F.S. value and displayed in graph (To be continued)	

9. Edit measurement data (continued)

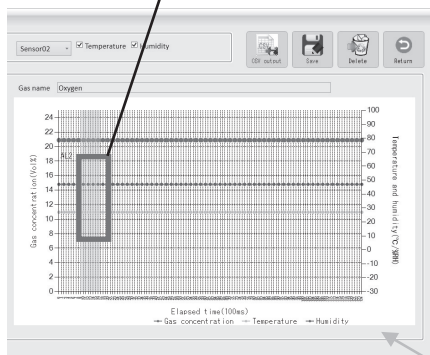
(Continued)

Item	Button/indication	Function
3	[CSV output] button	Click on this button to output the selected measurement data to a CSV file
4	[Save] button	Click on this button to save selected measurement data
5	[Delete] button	Clicking on this button deletes selected measurement data
6	[Return] button	Clicking on this button returns you to the 'Measurement data list' screen
7	[End] button	Used to end the "Utility for XP-3000II" program. (Clicking this button shows a dialog box for confirmation. Click on [OK] to confirm the end the program.)

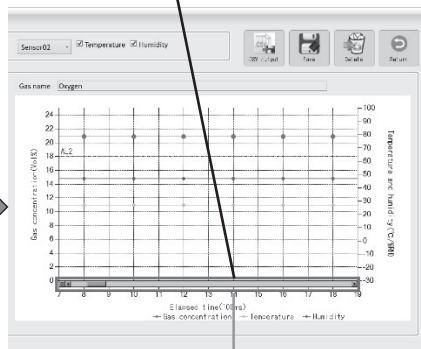
Note

It is possible to enlarge and view the graph without setting the unit of time (time resolution). To save the enlarged graph, the time resolution needs to be set.

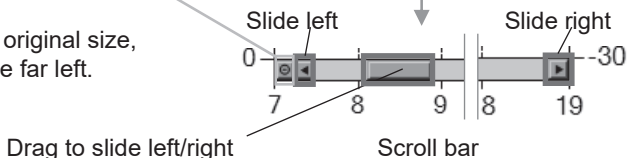
- (1) Drag to select the area you want to zoom in on. The selected area becomes lighter in color.



- (2) The selected area is enlarged. The vertical-axis scale cannot be changed; only the horizontal-axis scale can be enlarged. A scroll bar appears at the bottom of the graph.



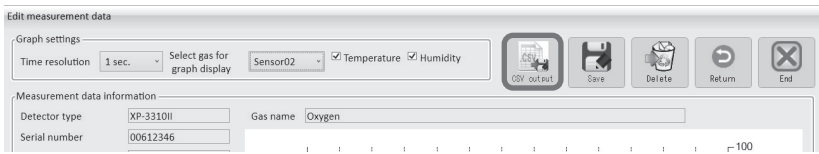
- (3) To reset the graph to its original size, click on the button on the far left.



9. Edit measurement data (continued)

□ Output to CSV file

(1) Click on the [CSV output] button.



(2) Specify the destination to save the data, then click on [OK].

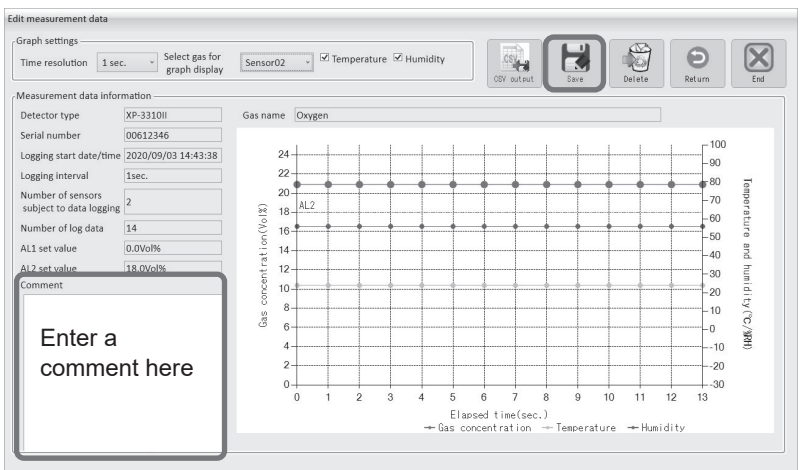
Note

If the measured values exceed the F.S. value, they will be replaced with the F.S. value and saved.

□ Comment saving

Enter a comment, and then click on the [Save] button.

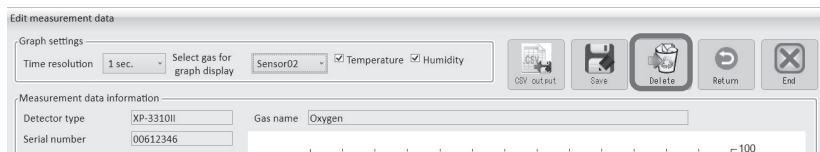
To delete a saved comment, delete it from the comment box, and then click on the [Save] button. ***Do not use the [Delete] button for deleting the saved comment. Clicking on the [Delete] button deletes the measurement data itself.**



9. Edit measurement data (continued)

Measurement data deletion

(1) Click on the [Delete] button to delete the measurement data which is currently displayed.



(2) A confirmation message appears. Click on [OK].



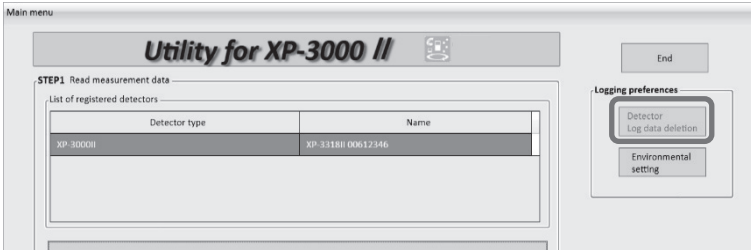
CAUTION

Once measurement data is deleted, it cannot be restored. Before deleting any data, verify whether you need to do so.

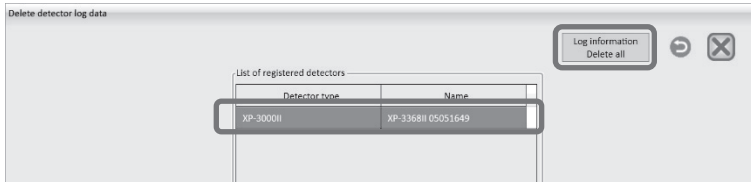
10. Detector's log deletion

It is possible to delete the entire log data from the gas detector without reading it out. Once the data is deleted, it cannot be restored. Before deleting any data, verify whether you need to do so.

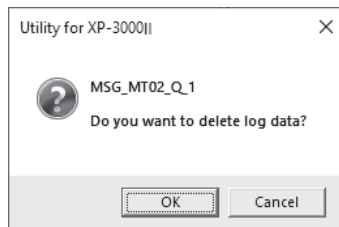
- (1) By referring to the gas detector's instruction manual, set the detector's Bluetooth to ON and its data logging function to OFF.
- (2) Click on [Detector Log data deletion] on the main menu.



- (3) Select the detector to clear its log data, then click on [Log information Delete all].

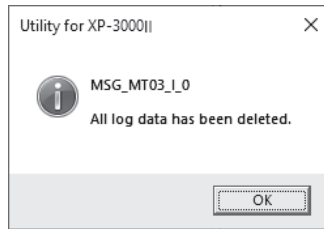



- (4) A dialog box asking if you want to delete log data appears. Click on [OK].

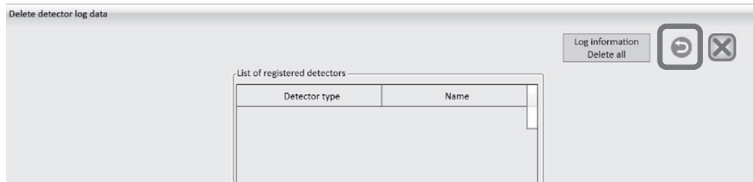


10. Detector's log deletion (continued)

- (5) A dialog box indicating the completion of log data deletion appears. All the data logs have been deleted from the detector. Click on [OK].



- (6) Click on the  button to return to the main menu.



MEMO

- Additional copies of this manual may be purchased. Contact us for ordering.
- The contents of this manual are subject to change without notice for improvement.

Authorized representative

NEW COSMOS ELECTRIC CO., LTD.

2-5-4 Mitsuyanaka, Yodogawa-ku, Osaka 532-0036 Japan
www.newcosmos-global.com